



Mobile Crisis Intervention Services is a program funded by the State of Connecticut in partnership with the United Way of Connecticut 2-1-1 and the Child Health and Development Institute (CHDI).



# MOBILE CRISIS INTERVENTION SERVICES

Performance Improvement Center (PIC)

## *MONTHLY REPORT*

## September 2025

Updated 10/15/25

## **Table of Contents**

<b>Executive Summary .....</b>	<b>3</b>
<b>Section I: Mobile Crisis Statewide/Service Area Dashboard.....</b>	<b>5</b>
Figure 1. Total Call Volume by Call Type .....	5
Figure 2. Mobile Crisis Episodes by Service Area .....	5
Figure 3. Number Served Per 1,000 Children .....	5
Figure 4. Number Served Per 1,000 Children in Poverty .....	5
Figure 5. Mobile Response by Service Area .....	5
Figure 6. Mobile Episodes with a Response Time Under 45 Minutes .....	6
<b>Section II: Mobile Crisis Response .....</b>	<b>7</b>
Figure 7. Statewide 211 Disposition Frequency.....	7
Figure 8. Mobile Crisis Episodes by Provider .....	7
Figure 9. Actual Initial Mobile Crisis Response by Provider.....	7
Figure 10. 2-1-1 Recommended Response by Service Area – By Service Hours.....	7
Figure 11. Mobile Response by Provider.....	8
<b>Section III: Response Time .....</b>	<b>9</b>
Figure 12. Mobile Episodes with a Response Time Under 45 Minutes .....	9
Figure 13. Mobile Episodes with a Response Time Under 45 Minutes by Provider .....	9
Figure 14. Median Mobile Response Time in Minutes .....	9
Figure 15. Median Mobile Response Time by Provider in Minutes .....	9
<b>Section IV: Emergency Department Referrals .....</b>	<b>10</b>
Figure 16. Emergency Department Referrals.....	10
Figure 17. Emergency Department Referrals by Provider (% of Total Mobile Crisis Episodes) .....	10
<b>Section V: Length of Stay (LOS) .....</b>	<b>11</b>
Table 1. LOS for Discharged Episodes with a Crisis Response of Plus Stabilization Follow-up .....	11

**This report was prepared by the Mobile Crisis Intervention Services Performance Improvement Center (PIC):**

Teniola Akinosho, MPH, Data Analyst; Caleb Owen, Data Fellow; Kayla Theriault, MPH, Senior Associate; Yecenia Casiano, MS, Senior Project Coordinator; Kellie Randall, Ph.D., Associate Vice President of Quality Improvement; Heather Clinger, MPH, CPS, Program Manager (Wheeler Clinic); Eliana Colón, 2-1-1 Services Manager; Ronette Daniels, Director of 2-1-1 Services (United Way of CT-2-1-1); Jeffrey Vanderploeg, Ph.D., CEO

The Mobile Crisis Intervention Services Performance Improvement Center is housed at the



## Executive Summary

**Note:** As of January 2023, Mobile Crisis providers are available for a mobile response 24 hours a day, 7 days a week. Prior to January 2023, a mobile response was only available Monday – Friday 6:00 AM to 10:00 PM and from 1:00 PM to 10:00 PM on weekends. Unless stated otherwise, the data in this report reflects calls during all 24 hours. Select charts continue to break out data by old and new hours to highlight any differences during the expanded hours.

**Call and Episode Volume:** In September 2025, 2-1-1 and Mobile Crisis received 1523 calls including 1103 (72.4%) handled by Mobile Crisis providers and 420 calls (27.6%) handled by 2-1-1 only (e.g., calls for other information or resources, calls transferred to 9-1-1). This month showed a 1.9% decrease in call volume from September 2024 (n=1553). Of the total calls and episodes, Mobile Crisis and 2-1-1 received 128 calls during the expanded overnight and weekend hours. This included 78 (60.9%) calls handled by Mobile Crisis providers and 50 (39.1%) calls handled by 2-1-1 only. The overnight and weekend call volume in September 2025 was lower than last month (131) and higher than September 2024 (117).

Among the **1103 episodes of care** this month, episode volume ranged from 122 episodes (New Haven) to 320 episodes (Hartford). The statewide average service reach rate per 1,000 children this month was 1.5 with service area rates ranging from 0.8 (Southwestern) to 2.2 (Hartford) relative to their specific child populations. Additionally, the number of episodes generated relative to the number of children in poverty in each service area yielded a statewide average poverty service reach rate of 3.3 per 1,000 children in poverty, with service area rates ranging from 1.6 (New Haven) to 9.0 (Central). During the expanded overnight and weekend hours, there were 78 episodes of care with episode volume ranging from 4 episodes (Southwestern) to 19 episodes (Western). The number of overnight and weekend episodes in September 2025 was lower than last month (82, August 2025).

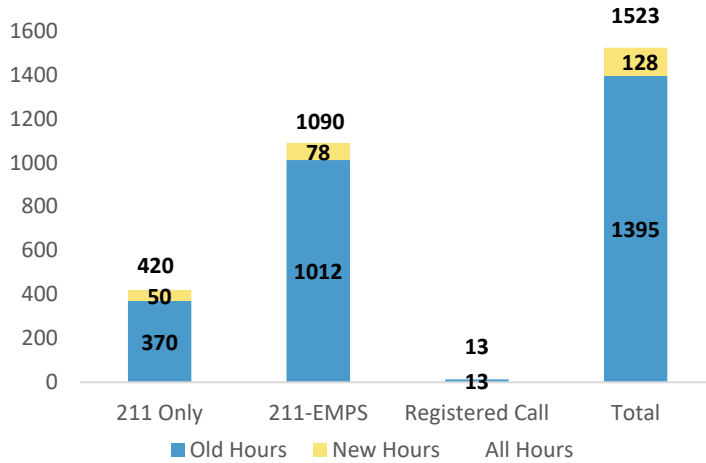
**Mobility:** Statewide mobility was **96.5% this month**, which is similar to the rate in September 2024 (95.50%). All six areas surpassed the 90% benchmark this month, with performance ranging from 92.2% (Eastern) to 99.4% (Central). Mobility for individual providers ranged from 90.0% (Wellmore: Danbury) to 100% (CHR; CFGC: EMPS). All fourteen individual providers met or exceeded the 90% mobility rate benchmark. The statewide mobility rate during the new hours was 85.7%, with three regions exceeding the 90% benchmark. Performance ranged from 66.7% (Southwestern) to 100.0% (Central and New Haven). The mobility rate during the traditional Mobile Crisis hours was 97.0%, similar to the overall rate of 96.5%. During the new hours, 37.2% of episodes requested a mobile response, 23.1% requested a deferred mobile response, and 39.7% requested a non-mobile response; in the traditional hours, 67.9% of episodes requested a mobile response, 24.7% requested a deferred mobile response, and 7.4% requested a non-mobile response. As seen in the mobility rate, the vast majority of callers requesting a mobile or deferred mobile response receive it.

**Response Time:** Statewide, this month **91.5% of mobile episodes received a face-to-face response in 45 minutes or less**, which is higher than the rate in September 2024 (89.1%). All six service areas were above the benchmark of 80% of mobile responses provided in 45 minutes or less, with performance ranging from 85.0% (Hartford) to 97.8% (Central). Thirteen of the fourteen sites met the 80% benchmark. The statewide median mobile response time was 28.0 minutes. The rate of episodes meeting response time during the traditional hours (92.1%) was similar to the overall rate of 91.5%. During the expanded hours 73.9% of mobile episodes received a response within 45 minutes, with performance ranging from 25.0% (Eastern) to 100% (Central and New Haven). When looking at these rates, it is important to keep in mind that the number of overnight episodes is very low, and the number receiving a Mobile response is even lower.

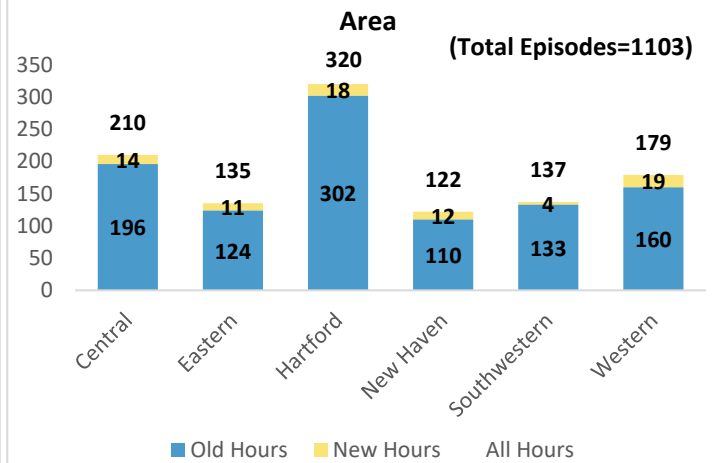
**Length of Stay (LOS):** The statewide median LOS for episodes discharged this month with a crisis response of *plus stabilization follow-up* was 11.0 days. The regional median LOS ranged from 6.0 days (Southwestern) to 17.0 days (New Haven). Note: these calculations only include episodes that began during FY2026.

## Section I: Mobile Crisis Statewide/Service Area Dashboard

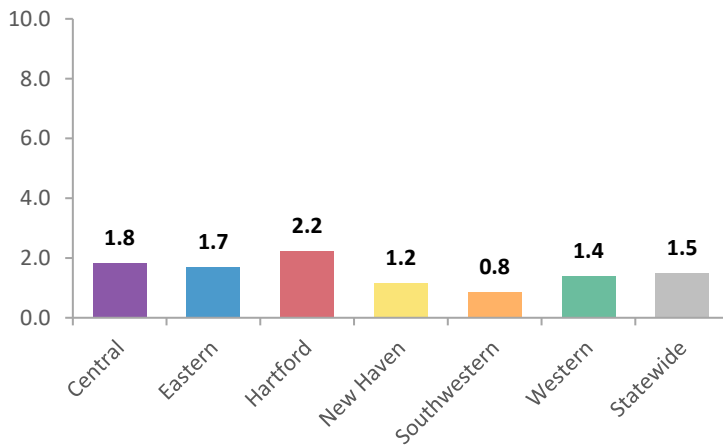
**Figure 1. Total Call Volume by Call Type**



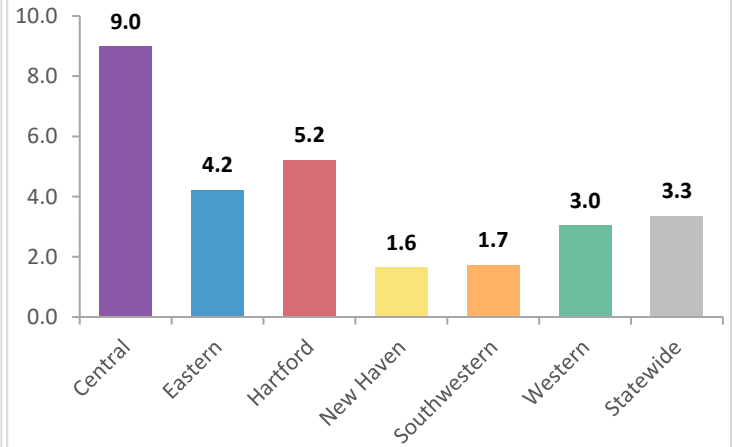
**Figure 2. Mobile Crisis Episodes by Service Area**



**Figure 3. Number Served Per 1,000 Children**



**Figure 4. Number Served per 1,000 Children in Poverty**



**Figure 5. Mobile Response by Service Area**

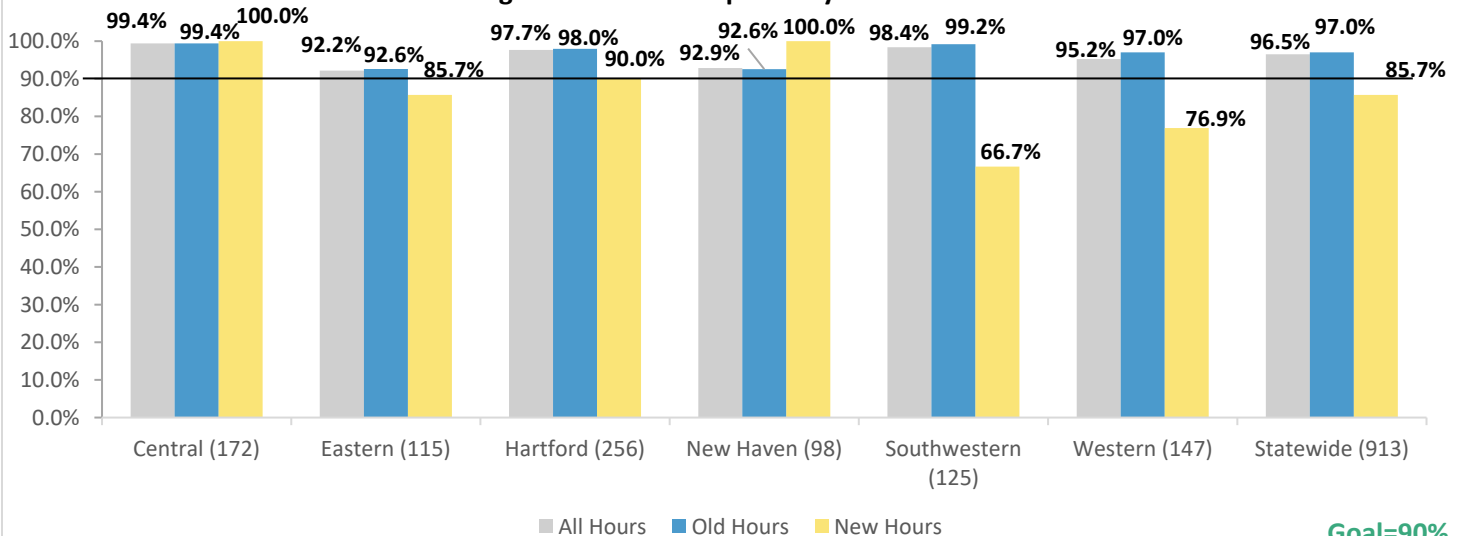
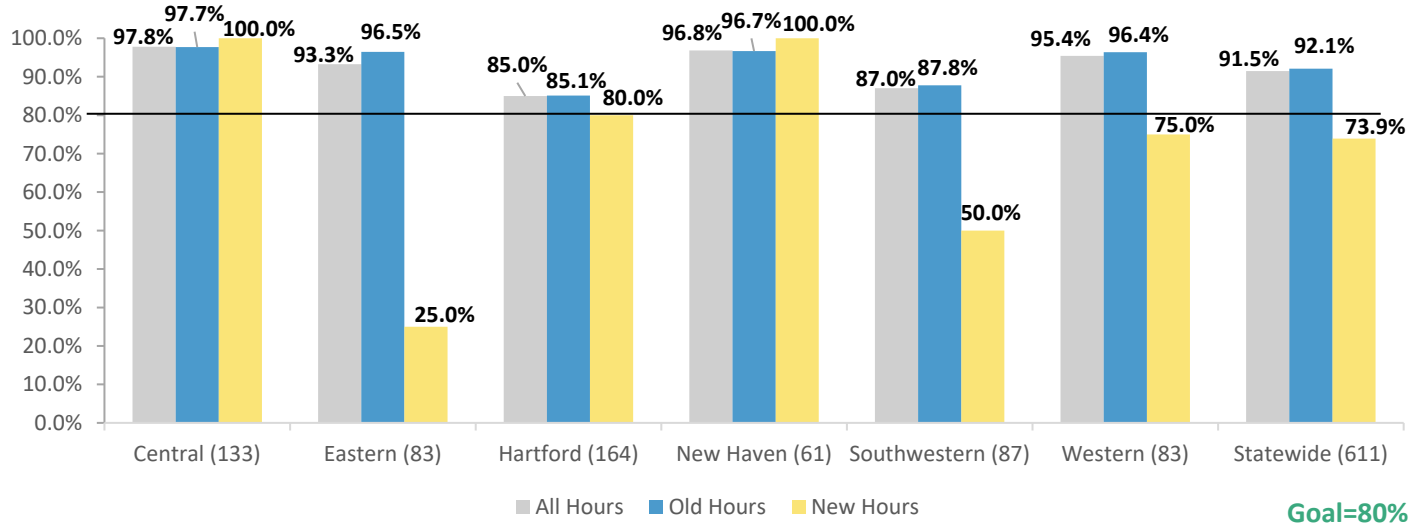
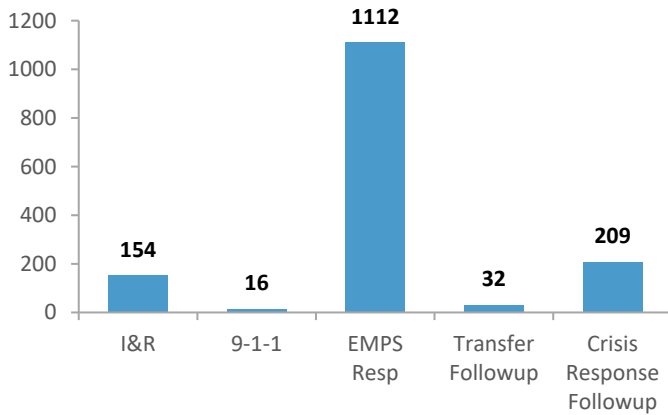


Figure 6. Mobile Episodes with a Response Time Under 45 Minutes

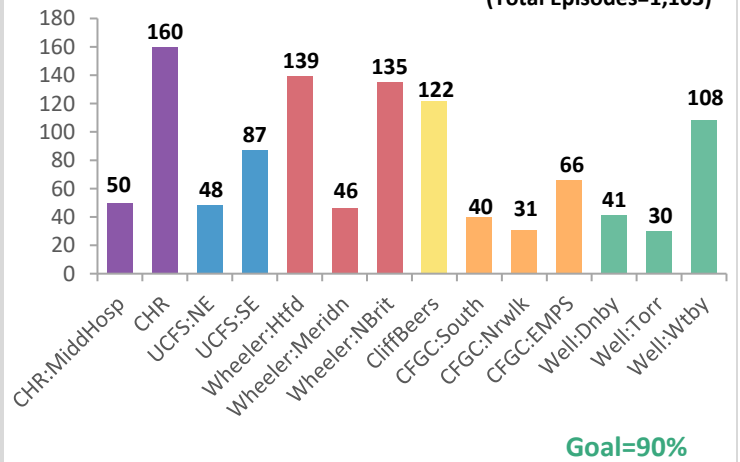


## Section II: Mobile Crisis Response

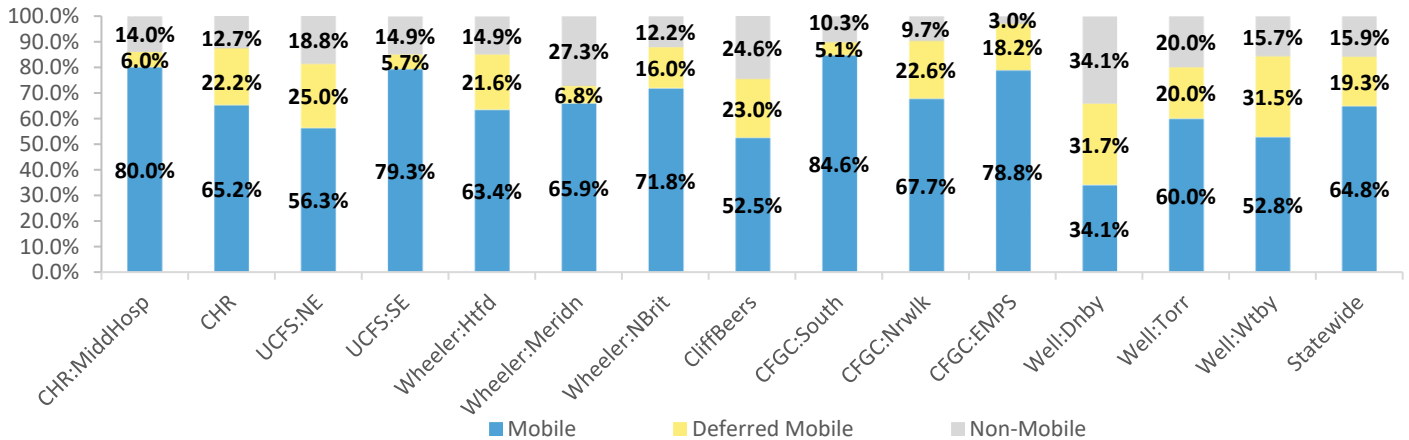
**Figure 7. Statewide 2-1-1 Call Disposition**



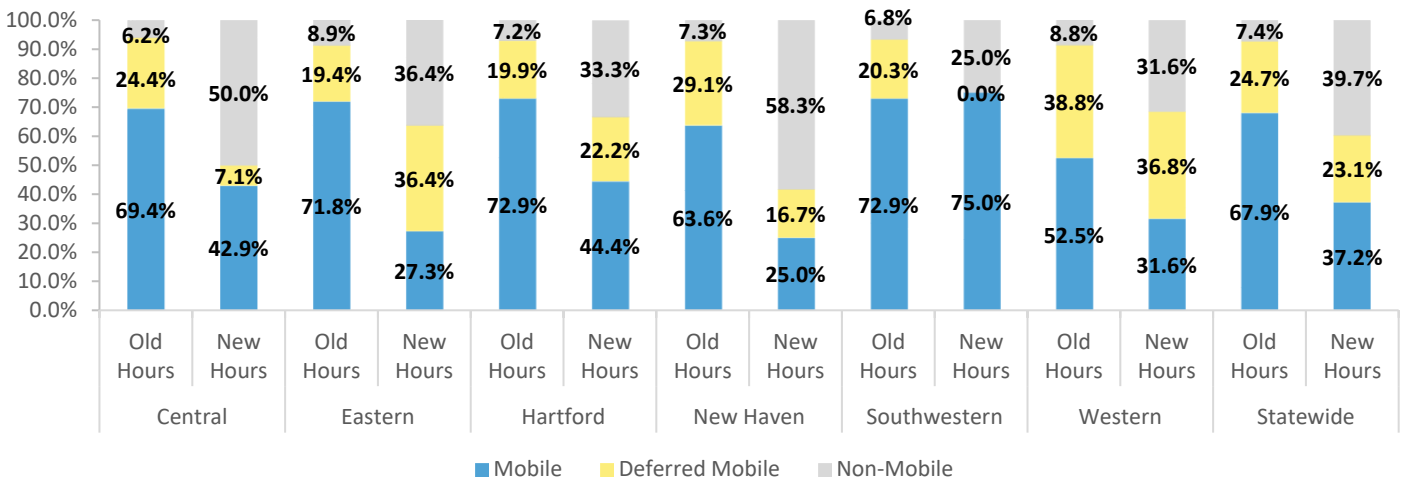
**Figure 8. Mobile Crisis Episodes by Provider**  
(Total Episodes=1,103)



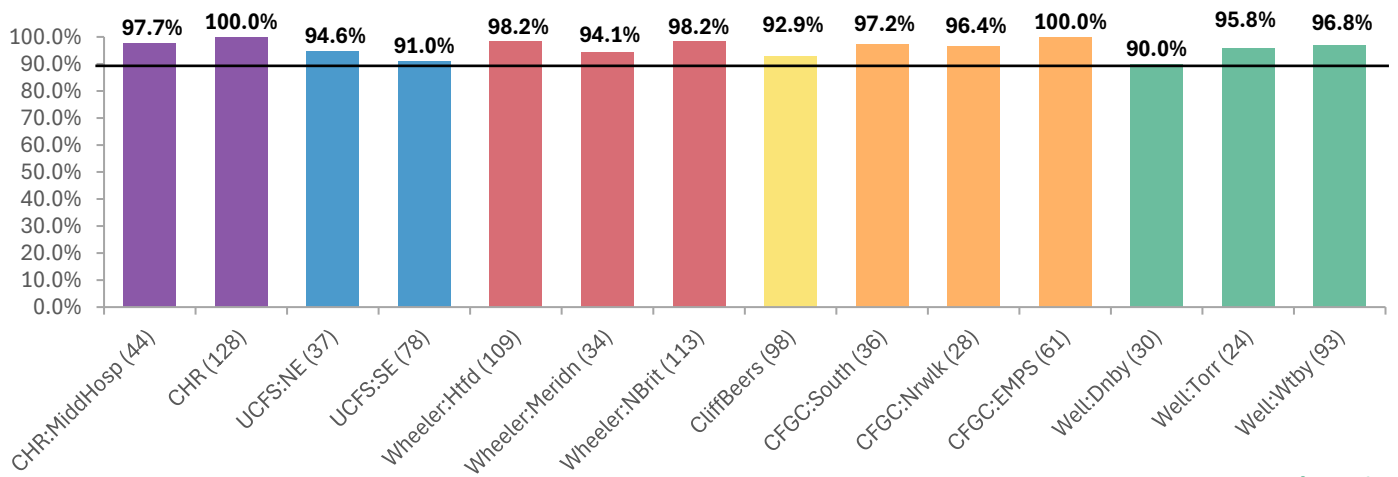
**Figure 9. Actual Initial Mobile Crisis Response by Provider**



**Figure 10. Recommended Response by Service Area - by Service Hours**



**Figure 11. Mobile Response (Mobile & Deferred Mobile) By Provider**

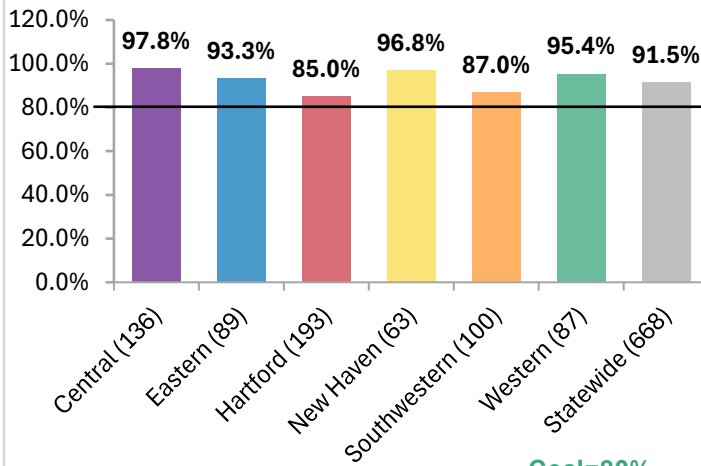


Note: Counts of 211-recommended mobile episodes are in parentheses.

**Goal=90%**

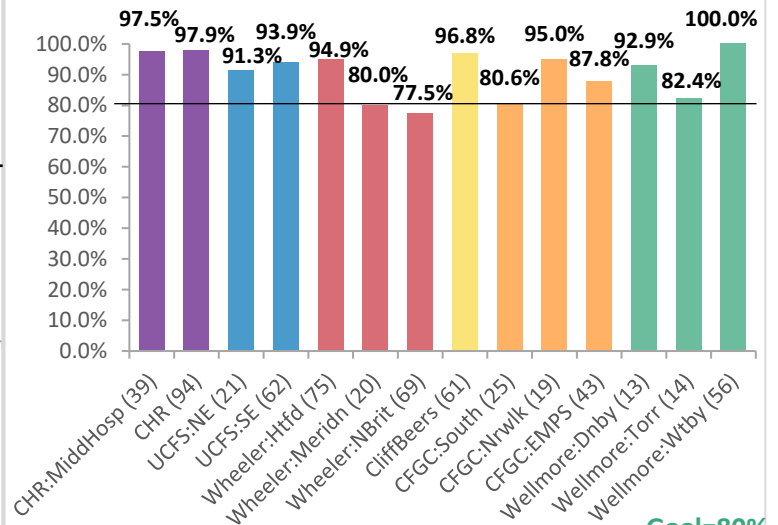
### Section III: Response Time

**Figure 12. Mobile Episodes with a Response Time Under 45 Minutes**



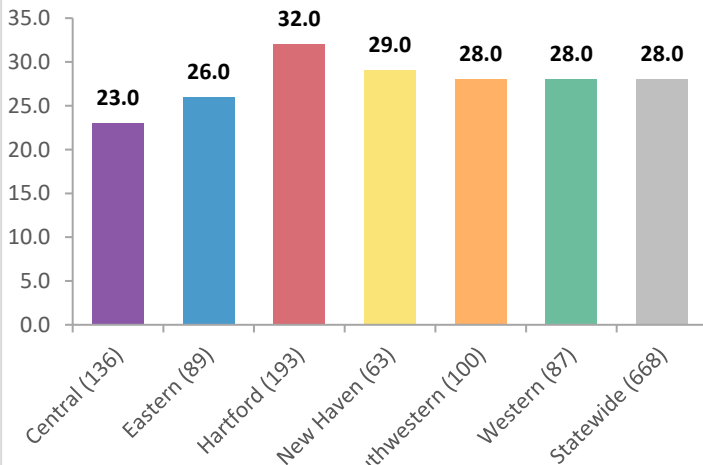
Note: Counts of mobile episodes under 45 mins. are in parentheses.

**Figure 13. Mobile Episodes with a Response Time Under 45 Minutes by Provider**



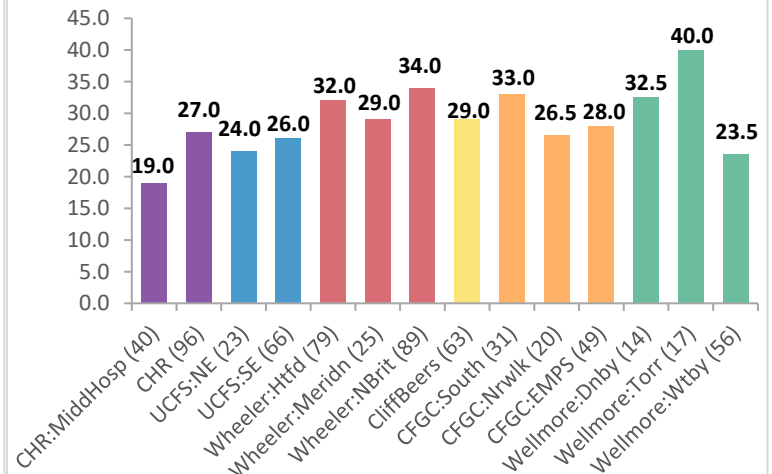
Note: Counts of mobile episodes under 45 mins. are in parentheses.

**Figure 14. Median Mobile Response Time in Minutes**



Note: Count of mobile episodes are in parentheses.

**Figure 15. Median Mobile Response Time by Provider in Minutes**



Note: Count of mobile episodes are in parentheses.



## Section IV: Emergency Department Referrals

Figure 16. Emergency Department Referrals (% of Total Mobile Crisis Episodes)

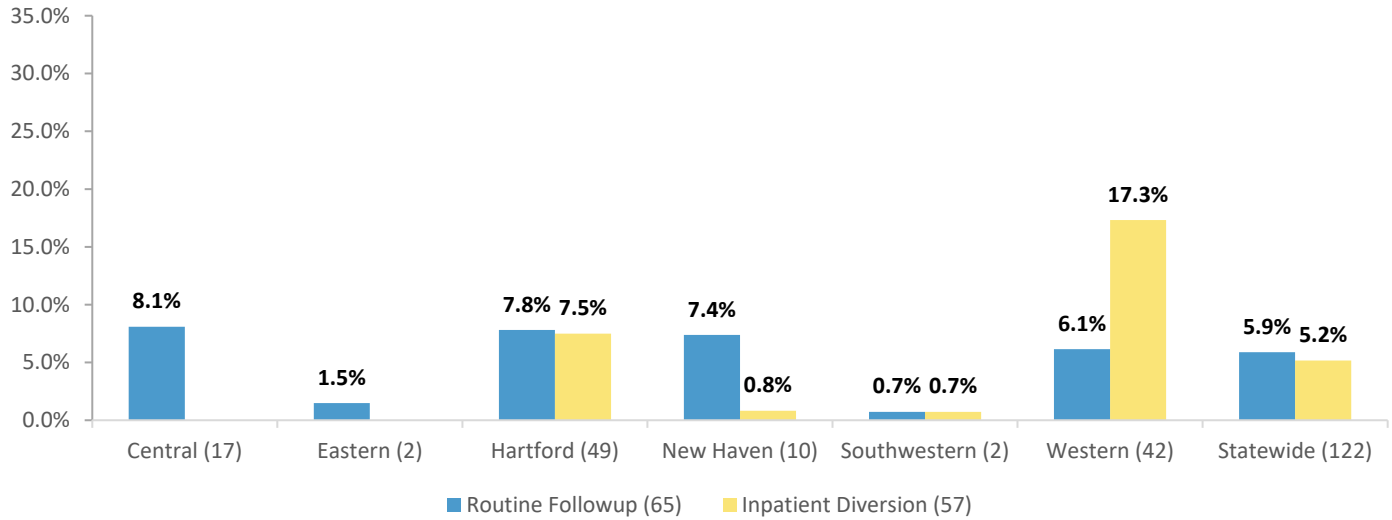
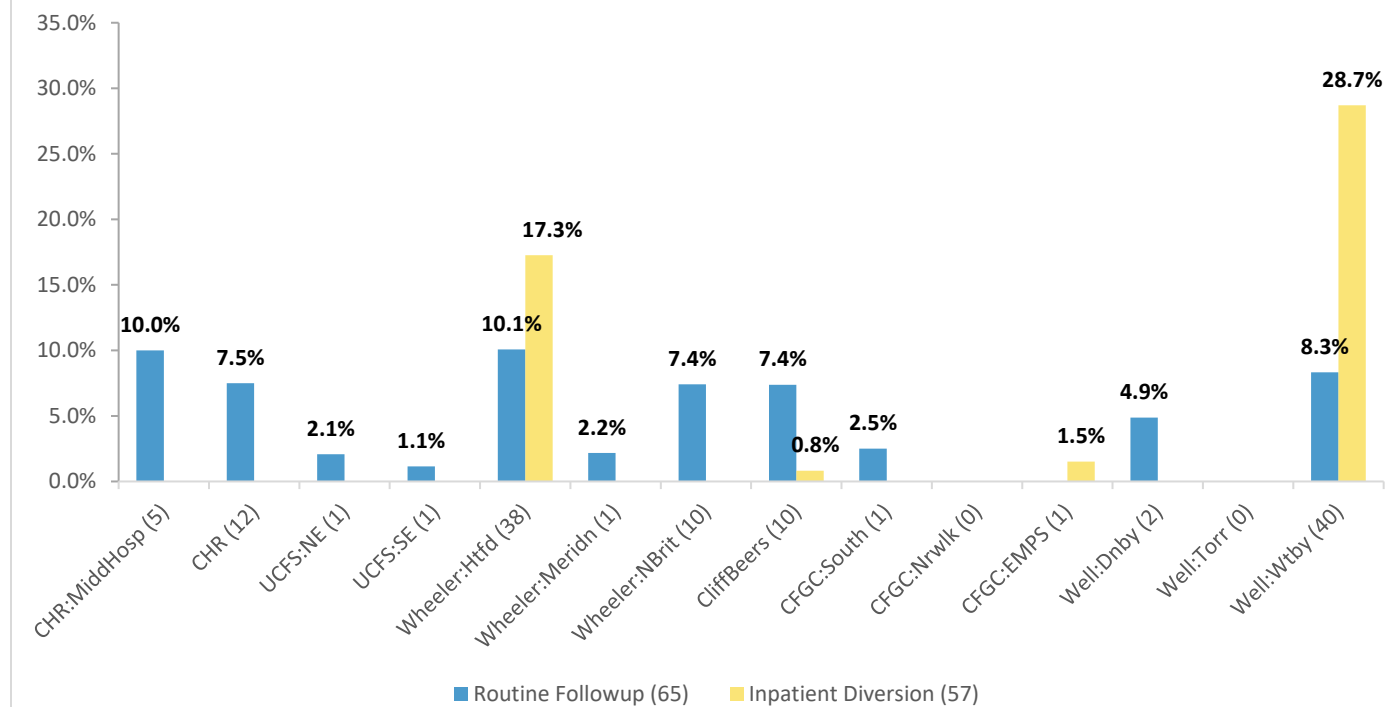


Figure 17. Emergency Department Referrals by Provider (% of Total Mobile Crisis Episodes)



## Section V: Length of Stay (LOS)

**Table 1. LOS for Discharged Episodes\* with a Crisis Response Plus Stabilization Follow-up**

	Discharged Episodes with a Crisis Response of Plus Stabilization Follow-up			
	Number of Episodes	Mean LOS (in days)	Median LOS (in days)	Percent Exceeding 45 Days
<b>STATEWIDE</b>	<b>127</b>	<b>11.9</b>	<b>11.0</b>	<b>0.0% (n = 0)</b>
<b>Central</b>	<b>48</b>	<b>13.4</b>	<b>13.0</b>	<b>0.0% (n = 0)</b>
<b>Eastern</b>	<b>2</b>	<b>16.0</b>	<b>16.0</b>	<b>0.0% (n = 0)</b>
<b>Hartford</b>	<b>53</b>	<b>11.1</b>	<b>10.0</b>	<b>0.0% (n = 0)</b>
<b>New Haven</b>	<b>3</b>	<b>18.0</b>	<b>17.0</b>	<b>0.0% (n = 0)</b>
<b>Southwestern</b>	<b>2</b>	<b>6</b>	<b>6.0</b>	<b>0.0%(n=0)</b>
<b>Western</b>	<b>19</b>	<b>9.6</b>	<b>10.0</b>	<b>0.0% (n = 0)</b>

\*Only episodes that had both a start and a discharge date within FY2026 are included in this chart